

# Speed Control Electromagnetic Brake Motor 15, 25, 40, 60, 90, 120, 180W



## Motor Specification

Please refer to the page of SPEED CONTROL MOTOR.

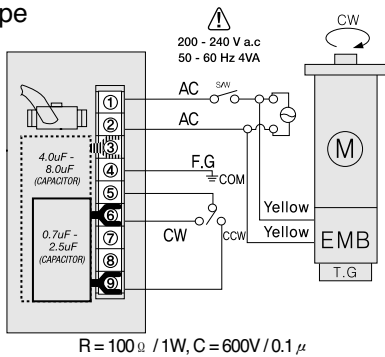
## Permissible Torque When using gearhead

Please refer to the page of SPEED CONTROL MOTOR.

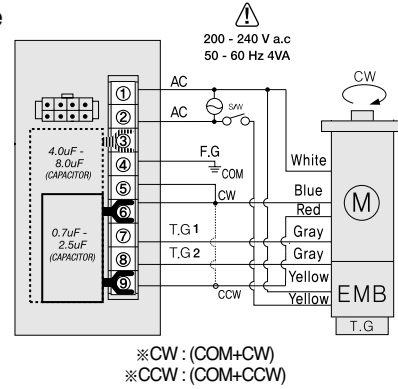
## Connection Diagrams

### ● FX1000A Controller (Digital type)

#### 1. Connector type

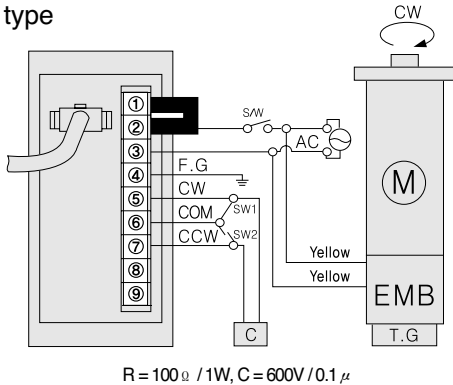


#### 2. Terminal type

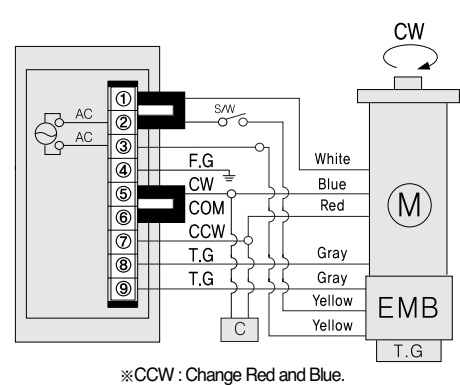


### ● DSA Controller (Unit type)

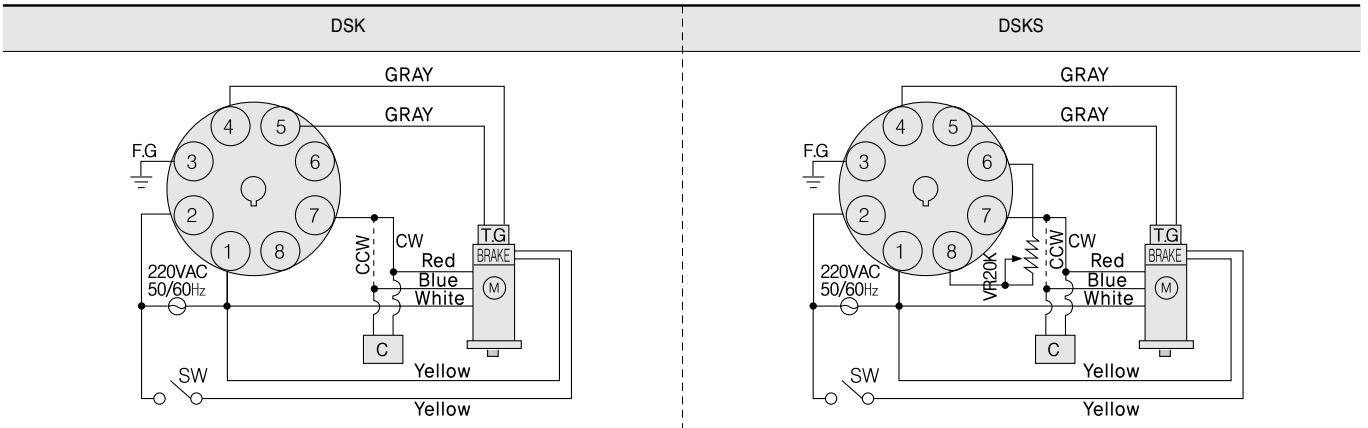
#### 1. Connector type



#### 2. Terminal type



### ● DSK(S) (Socket Type)



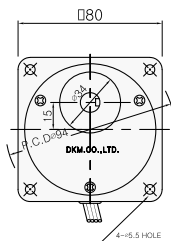
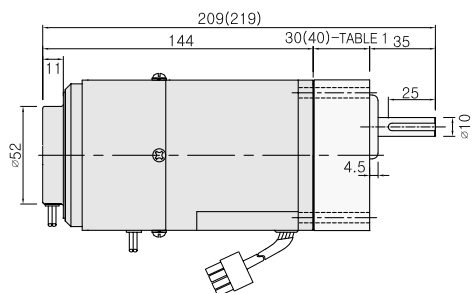
- For CCW operation, please change Red and blue.
- In case of F2 FAN type, power supply by connecting Black with No.1 and No.2 input.

## Dimension

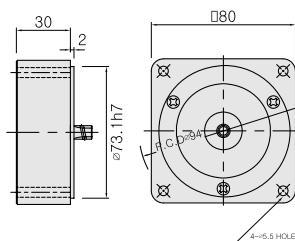
### 1. 15W

#### ● LEAD WIRE TYPE

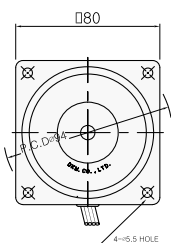
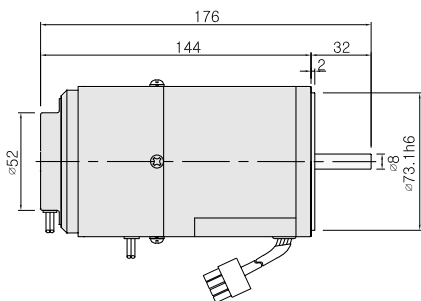
◆ GEARED MOTOR \* MOTOR MODEL : 8SBDG□-15G (NO FAN)  
\* HEAD MODEL : 8GB□3BMH - 8GB□360BMH



◆ INTER-DECIMAL GEARHEAD  
\* MODEL : 8XD10M□

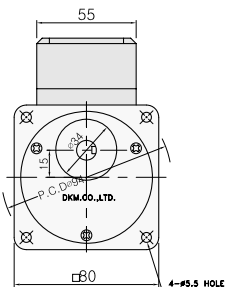
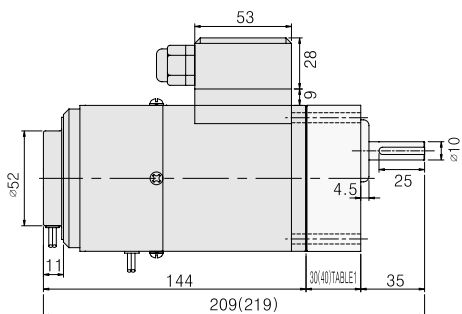


◆ MOTOR ONLY \* MOTOR MODEL : 8SBD□□-15 (NO FAN)



#### ● TERMINAL BOX TYPE

\* MOTOR MODEL : 8SBDG□-15G (NO FAN)



#### ◆ KEY SPEC

| MOTOR | GEARHEAD |
|-------|----------|
|       |          |

#### ◆ 30(40)-TABLE 1

| SIZE(mm) | GEAR RATIO             |
|----------|------------------------|
| 30       | 8GB□3BMH - 8GB□18BMH   |
| 40       | 8GB□25BMH - 8GB□360BMH |

#### ◆ WEIGHT

| PART             | WEIGHT(Kg)              |      |
|------------------|-------------------------|------|
| MOTOR            | 2.09                    |      |
| DECIMAL GEARHEAD | 0.44                    |      |
| GEAR HEAD        | 8GB□3BMH - 8GB□18BMH    | 0.48 |
|                  | 8GB□25BMH - 8GB□30BMH   | 0.61 |
|                  | 8GB□36BMH - 8GB□180BMH  | 0.67 |
|                  | 8GB□200BMH - 8GB□360BMH | 0.63 |

#### ◆ GEARHEAD OUTPUT

| MODEL                                 | SHAFT |
|---------------------------------------|-------|
| ROUND TYPE<br>8GBS3BMH<br>~8GBS360BMH |       |
| D-CUT TYPE<br>8GBD3BMH<br>~8GBD360BMH |       |
| KEY TYPE<br>8GBK3BMH<br>~8GBK360BMH   |       |

#### ◆ MOTOR OUTPUT

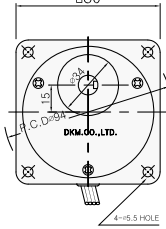
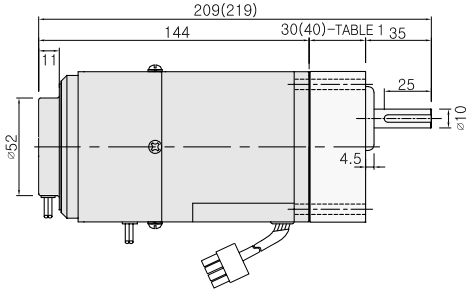
| MODEL                   | SHAFT |
|-------------------------|-------|
| GEAR TYPE<br>8SBDG□-15G |       |
| ROUND TYPE<br>8SBD□-15  |       |
| D-CUT TYPE<br>8SBD□-15  |       |
| KEY TYPE<br>8SBDK□-15   |       |

\* Note : Above table indicates output shaft dimension made by user's request and ★ indicates the basic dimension in factory shipping.

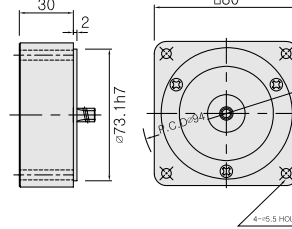
2. 25W

● LEAD WIRE TYPE

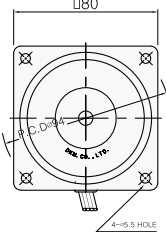
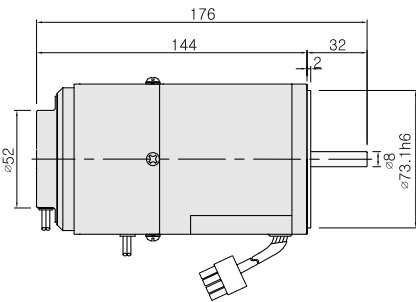
- ◆ GEARED MOTOR \* MOTOR MODEL : 8SBDG□-25G(NO FAN)  
\* HEAD MODEL : 8GB□3BMH - 8GB□360BMH



- ◆ INTER-DECIMAL GEARHEAD \* MODEL : 8XD10M□



- ◆ MOTOR ONLY \* MOTOR MODEL : 8SBD□□-25(NO FAN)

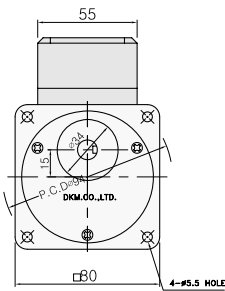
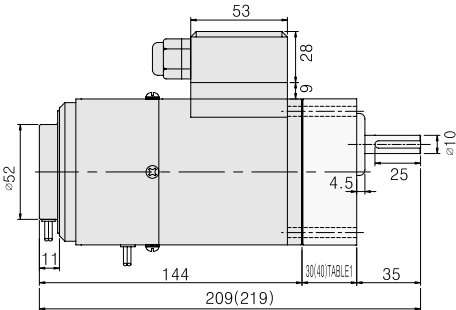


- ◆ GEARHEAD OUTPUT

| MODEL                   | SHAFT                         |
|-------------------------|-------------------------------|
| ROUND TYPE              | 35<br>φ 10                    |
| 8GBS3BMH<br>-8GBS360BMH |                               |
| D-CUT TYPE              | 35<br>25<br>10<br>9.0<br>φ 10 |
| 8GBD3BMH<br>-8GBD360BMH |                               |
| KEY TYPE                | 35<br>25<br>φ 10 ★            |
| 8GBK3BMH<br>-8GBK360BMH |                               |

● TERMINAL BOX TYPE

- \* MOTOR MODEL : 8SBDG□-25G(NO FAN)



- ◆ KEY SPEC

| MOTOR | GEARHEAD |
|-------|----------|
|       |          |

- ◆ 30(40)-TABLE 1

| SIZE(mm) | GEAR RATIO             |
|----------|------------------------|
| 30       | 8GB□3BMH - 8GB□18BMH   |
| 40       | 8GB□25BMH - 8GB□360BMH |

- ◆ WEIGHT

| PART             | WEIGHT(Kg)              |      |
|------------------|-------------------------|------|
| MOTOR            | 2.09                    |      |
| DECIMAL GEARHEAD | 0.44                    |      |
| GEAR HEAD        | 8GB□3BMH - 8GB□18BMH    | 0.48 |
|                  | 8GB□25BMH - 8GB□30BMH   | 0.61 |
|                  | 8GB□36BMH - 8GB□180BMH  | 0.67 |
|                  | 8GB□200BMH - 8GB□360BMH | 0.63 |

- ◆ MOTOR OUTPUT

| MODEL      | SHAFT                    |
|------------|--------------------------|
| GEAR TYPE  | 11<br>φ 8                |
| 8SBDG□-25G |                          |
| ROUND TYPE | 32<br>φ 8 ★              |
| 8SBD□-25   |                          |
| D-CUT TYPE | 32<br>25<br>7-0.1<br>φ 8 |
| 8SBD□-25   |                          |
| KEY TYPE   | 32<br>25<br>φ 8          |
| 8SBD□-25   |                          |

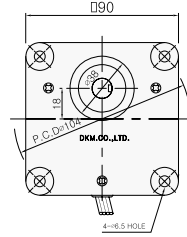
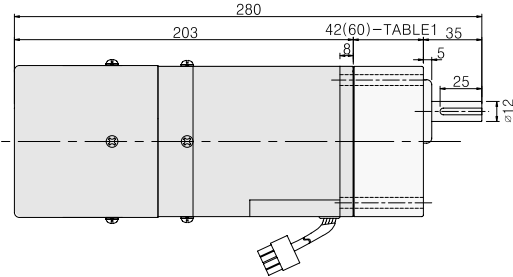
\* Note : Above table indicates output shaft dimension made by user's request and ★ indicates the basic dimension in factory shipping.

### 3. 40W

#### ● LEAD WIRE TYPE

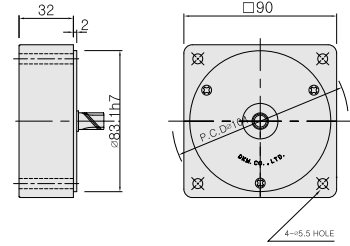
##### ◆ GEARED MOTOR

- \* MOTOR MODEL : 9SBDG□-40F2G (POWERFUL FAN)
- \* GEARHEAD MODEL : 9GB□3MH - 9GB□180MH

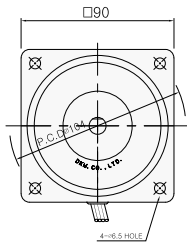
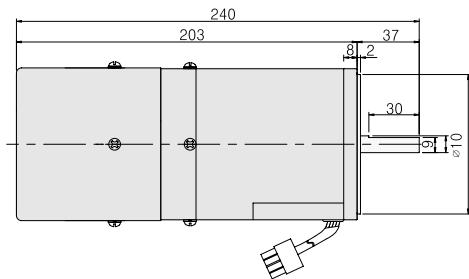


##### ◆ INTER-DECIMAL GEARHEAD

- \* MODEL : 9XD10M□

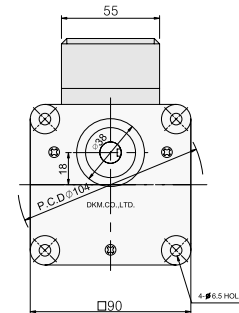
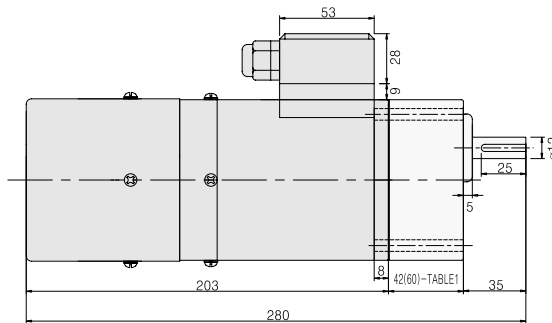


##### ◆ MOTOR ONLY \* MOTOR MODEL : 9SBD□□-40F2 (POWERFUL FAN)



#### ● TERMINAL BOX TYPE

- \* MOTOR MODEL : 9SBDG□-40F2G-T (POWERFUL FAN)



\* Note : For speed control motor, powerful Fan(F2) is basic specification.

#### ◆ MOTOR OUTPUT

| MODEL       | SHAFT |
|-------------|-------|
| GEAR TYPE   | 17.5  |
| 9SBDG□-40 G |       |
| ROUND TYPE  | 37    |
| 9SBD□-40    |       |
| D-CUT TYPE  | 37    |
| 9SBD□-40    |       |
| KEY TYPE    | 37    |
| 9SBDK□-40   |       |

#### ◆ KEY SPEC

| MOTOR | GEARHEAD |
|-------|----------|
|       |          |
|       |          |

#### ◆ 42(60)-TABLE1

| SIZE(mm) | GEAR RATIO           |
|----------|----------------------|
| 42       | 9GB□3MH - 9GB□15MH   |
| 60       | 9GB□18MH - 9GB□180MH |

#### ◆ WEIGHT

| PART             | WEIGHT(Kg)           |      |
|------------------|----------------------|------|
| MOTOR            | 3.09                 |      |
| DECIMAL GEARHEAD | 0.5                  |      |
| GEAR HEAD        | 9GB□3MH - 9GB□15MH   | 0.67 |
|                  | 9GB□18MH - 9GB□30MH  | 0.96 |
|                  | 9GB□36MH - 9GB□180MH | 1.07 |

#### ◆ GEARHEAD OUTPUT

| MODEL               | SHAFT |
|---------------------|-------|
| ROUND TYPE          | 35    |
| 9GBS3MH - 9GBS180MH |       |
| D-CUT TYPE          | 35    |
| 9GBD3MH - 9GBD180MH |       |
| KEY TYPE            | 35    |
| 9GBK3MH - 9GBK180MH |       |

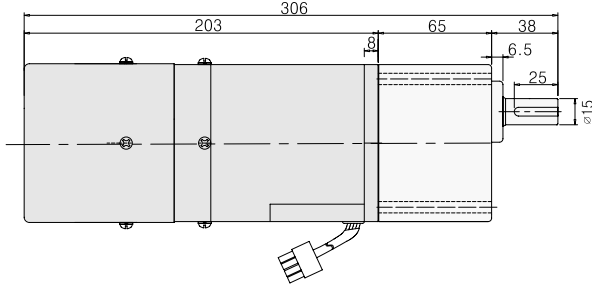
\* Note : Above table indicates output shaft dimension made by user's request and ★ indicates the basic dimension in factory shipping.

4. 60W

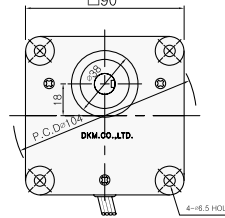
● LEAD WIRE TYPE

◆ GEARED MOTOR

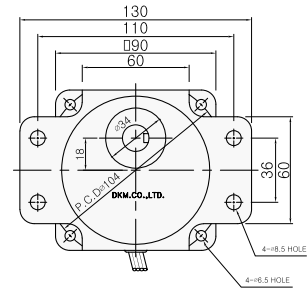
\* MOTOR MODEL : 9SBDG□-60F2P (POWERFUL FAN)



\* GEARHEAD MODEL:  
9PB □ 3BH - 9PB □180BH

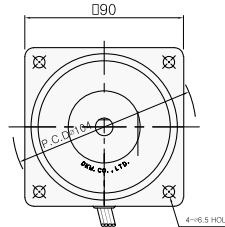
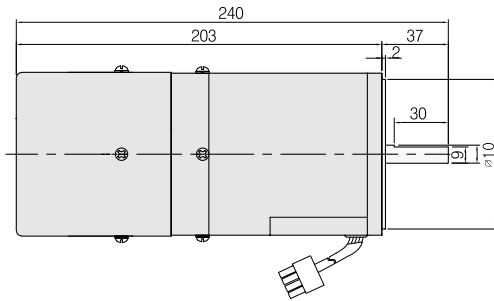


\* GEARHEAD MODEL:  
9PF □ 3BH - 9PF □180BH



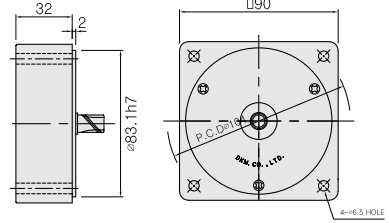
◆ MOTOR ONLY

\* MOTOR MODEL : 9SBD□□-60F2 (POWERFUL FAN)



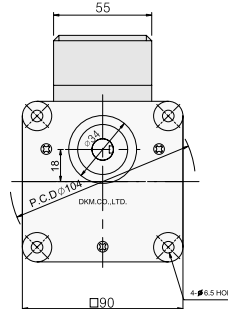
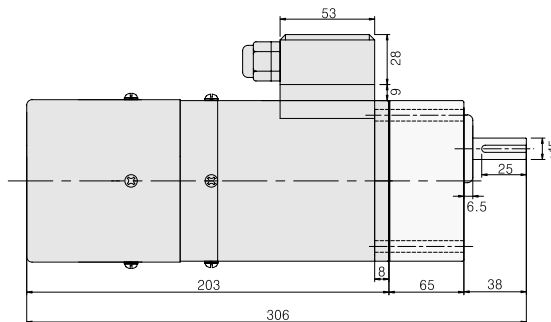
◆ INTER-DECIMAL GEARHEAD

\* MODEL : 9XD10M □



● TERMINAL BOX TYPE

\* MOTOR MODEL :  
9SBDG□-60F2P-T (POWERFUL FAN)



\* Note : For speed control motor, powerful Fan(F2) is basic specification.

◆ KEY SPEC

| MOTOR | GEARHEAD |
|-------|----------|
|       |          |

◆ WEIGHT

| PART             | WEIGHT(Kg)               |     |
|------------------|--------------------------|-----|
| MOTOR            | 3.09                     |     |
| DECIMAL GEARHEAD | 0.5                      |     |
| GEAR HEAD        | 9P□□3BH<br>- 9P□□9BH     | 1.3 |
|                  | 9P□□12.5BH<br>- 9P□□18BH | 1.3 |
|                  | 9P□□25BH<br>- 9P□□60BH   | 1.4 |
|                  | 9P□□90BH<br>- 9P□□180BH  | 1.4 |

◆ GEARHEAD OUTPUT

| MODEL                 | SHAFT |
|-----------------------|-------|
| ROUND TYPE            |       |
| 9P□S3BH<br>~9P□S180BH |       |
| D-CUT TYPE            |       |
| 9P□D3BH<br>~9P□D180BH |       |
| KEY TYPE              |       |
| 9P□K3BH<br>~9P□K180BH |       |

◆ MOTOR OUTPUT

| MODEL       | SHAFT |
|-------------|-------|
| GEAR TYPE   |       |
| 9SBDG□-60□P |       |
| ROUND TYPE  |       |
| 9SBD□-60□   |       |
| D-CUT TYPE  |       |
| 9SBD□-60□   |       |
| KEY TYPE    |       |
| 9SBDK□-60□  |       |

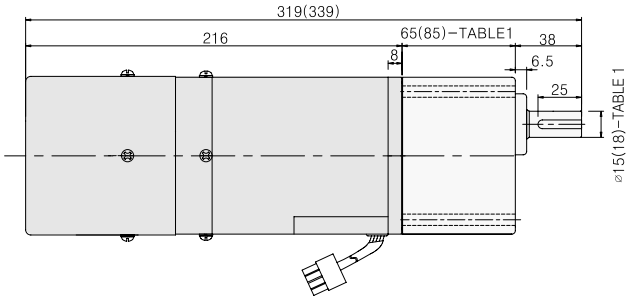
\* Note : Above table indicates output shaft dimension made by user's request and ★ indicates the basic dimension in factory shipping.

## 5. 90W

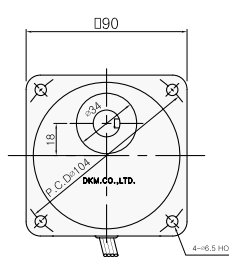
### ● LEAD WIRE TYPE

#### ◆ GEARED MOTOR

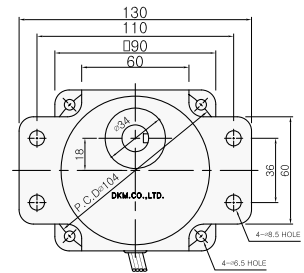
\* MOTOR MODEL : 9SBDG□-90F2P(H) (POWERFUL FAN)



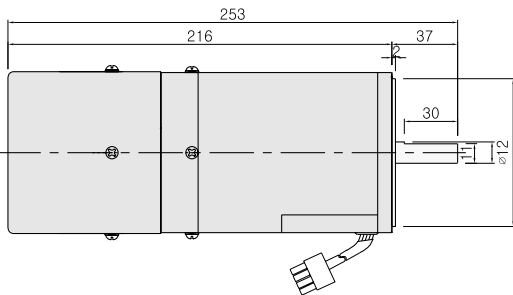
\* GEARHEAD MODEL :  
9PB □ 3BH - 9PB □ 180BH



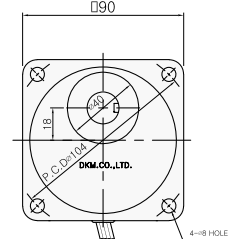
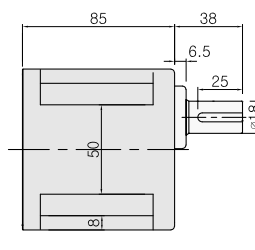
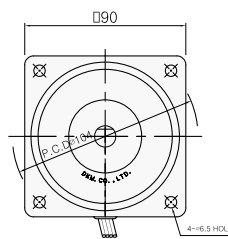
\* GEARHEAD MODEL :  
9PF □ 3BH - 9PF □ 180BH



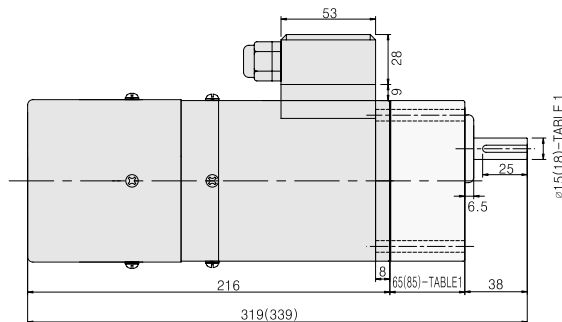
#### ◆ MOTOR ONLY \* MOTOR MODEL : 9SBD□□-90F2 (POWERFUL FAN)



\* GEARHEAD MODEL : 9HB □ 3BH - 9HB □ 180BH

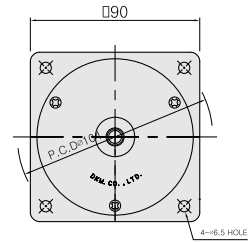
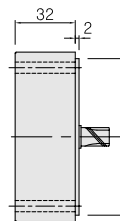
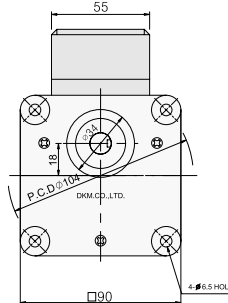


### ● TERMINAL BOX TYPE \* MOTOR MODEL : 9SBDG□-90F2P(H)-T (POWERFUL FAN)



#### ◆ INTER-DECIMAL GEARHEAD

\* MODEL : 9XD10M□



\* Note : For speed control motor, powerful Fan(F2) is basic specification.

#### ◆ 65(85)-TABLE 1

| SIZE(mm)       | GEARHEAD TYPE   |
|----------------|-----------------|
| 65 - $\phi 15$ | P TYPE GEARHEAD |
| 85 - $\phi 18$ | H TYPE GEARHEAD |

#### ◆ KEY SPEC

| MOTOR | GEARHEAD |
|-------|----------|
|       |          |

#### ◆ WEIGHT

| PART                             | WEIGHT(Kg) |        |
|----------------------------------|------------|--------|
| MOTOR                            | 3.8        |        |
| DECIMAL GEARHEAD                 | 0.5        |        |
| GEARHEAD TYPE                    | P TYPE     | H TYPE |
| 9P(H)□□ 3BH<br>- 9P(H)□□ 9BH     | 1.3        | 1.45   |
| 9P(H)□□ 12.5BH<br>- 9P(H)□□ 18BH | 1.3        | 1.5    |
| 9P(H)□□ 25BH<br>- 9P(H)□□ 60BH   | 1.4        | 1.7    |
| 9P(H)□□ 90BH<br>- 9P(H)□□ 180BH  | 1.4        | 1.8    |

#### ◆ GEARHEAD OUTPUT

| MODEL                            | P TYPE | H TYPE |
|----------------------------------|--------|--------|
| ROUND TYPE                       |        |        |
| 9P(H)□□ S3BH<br>~ 9P(H)□□ S180BH |        |        |
| D-CUT TYPE                       |        |        |
| 9P(H)□□ D3BH<br>~ 9P(H)□□ D180BH |        |        |
| KEY TYPE                         |        |        |
| 9P(H)□□ K3BH<br>~ 9P(H)□□ K180BH |        |        |

#### ◆ MOTOR OUTPUT

| MODEL           | SHAFT                          |
|-----------------|--------------------------------|
| GEAR TYPE       |                                |
| 9SBDG□-90□ P(H) | * 18.5 : P TYPE<br>22 : H TYPE |
| ROUND TYPE      |                                |
| 9SBD□□-90□      |                                |
| D-CUT TYPE      |                                |
| 9SBD□□-90□      | ★                              |
| KEY TYPE        |                                |
| 9SBDK□-90□      |                                |

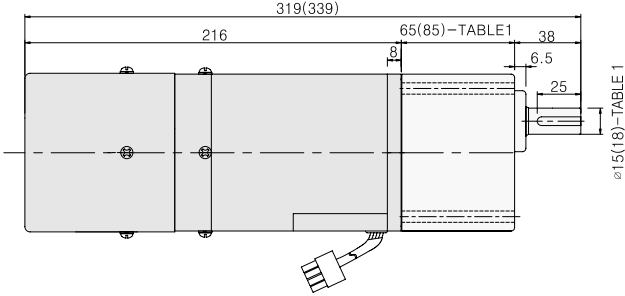
\* Note : Above table indicates output shaft dimension made by user's request and ★ indicates the basic dimension in factory shipping.

6. 120W

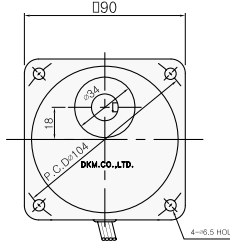
● LEAD WIRE TYPE

◆ GEARED MOTOR

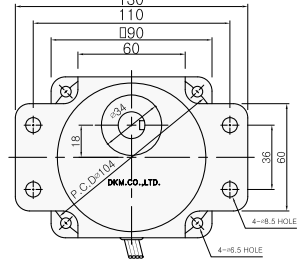
\* MOTOR MODEL : 9SBDG□-120F2P(H) (POWERFUL FAN)



\* GEARHEAD MODEL :  
9PB□3BH - 9PB□180BH

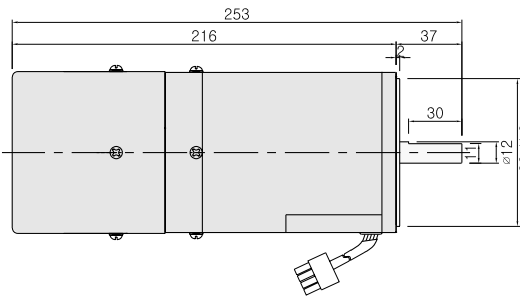


\* GEARHEAD MODEL :  
9PF□3BH - 9PF□180BH

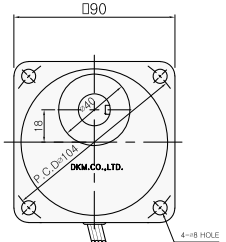
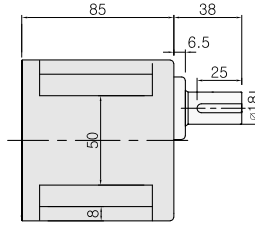
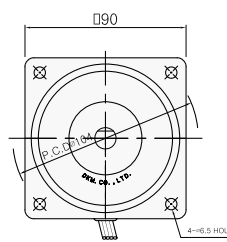


◆ MOTOR ONLY

\* MOTOR MODEL : 9SBD□□-120F2 (POWERFUL FAN)

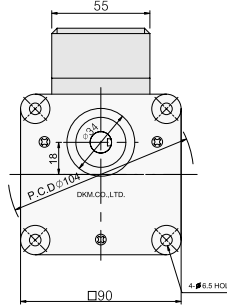
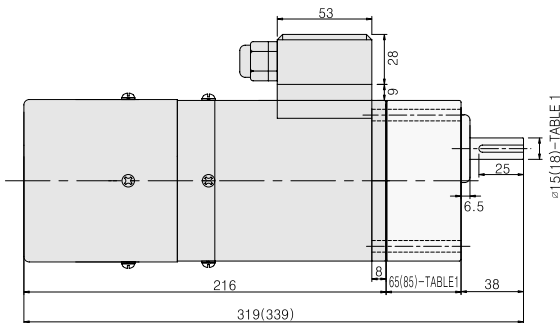


\* GEARHEAD MODEL : 9HB□3BH - 9HB□180BH



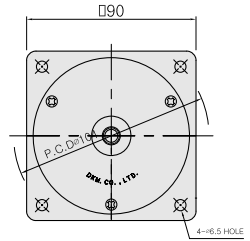
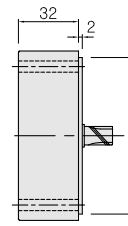
● TERMINAL BOX TYPE

\* MOTOR MODEL : 9SBDG□-120F2P(H)-T (POWERFUL FAN)



◆ INTER-DECIMAL GEARHEAD

\* MODEL : 9XD10M□



\* Note : For speed control motor, powerful Fan(F2) is basic specification.

◆ 65(85)-TABLE 1

| SIZE(mm)       | GEARHEAD TYPE   |
|----------------|-----------------|
| 65 - $\phi 15$ | P TYPE GEARHEAD |
| 85 - $\phi 18$ | H TYPE GEARHEAD |

◆ KEY SPEC

| MOTOR | GEARHEAD |
|-------|----------|
|       |          |

◆ WEIGHT

| PART             | WEIGHT(Kg)                     |        |        |
|------------------|--------------------------------|--------|--------|
| MOTOR            | 3.8                            |        |        |
| DECIMAL GEARHEAD | 0.5                            |        |        |
| GEAR HEAD        | GEARHEAD TYPE                  | P TYPE | H TYPE |
|                  | 9P(H)□□3BH<br>- 9P(H)□□9BH     | 1.3    | 1.45   |
|                  | 9P(H)□□12.5BH<br>- 9P(H)□□18BH | 1.3    | 1.5    |
|                  | 9P(H)□□25BH<br>- 9P(H)□□60BH   | 1.4    | 1.7    |
|                  | 9P(H)□□90BH<br>- 9P(H)□□180BH  | 1.4    | 1.8    |

◆ GEARHEAD OUTPUT

| MODEL                         | P TYPE | H TYPE |
|-------------------------------|--------|--------|
| ROUND TYPE                    |        |        |
| 9P(H)□□S3BH<br>~9P(H)□□S180BH |        |        |
| D-CUT TYPE                    |        |        |
| 9P(H)□□D3BH<br>~9P(H)□□D180BH |        |        |
| KEY TYPE                      |        |        |
| 9P(H)□□K3BH<br>~9P(H)□□K180BH |        |        |

◆ MOTOR OUTPUT

| MODEL           | SHAFT    |
|-----------------|----------|
| GEAR TYPE       | 18.5(22) |
| 9SBDG□-120□P(H) |          |
| ROUND TYPE      | 37       |
| 9SBD□-120□      |          |
| D-CUT TYPE      | 37       |
| 9SBD□-120□      |          |
| KEY TYPE        | 37       |
| 9SBD□-120□      |          |

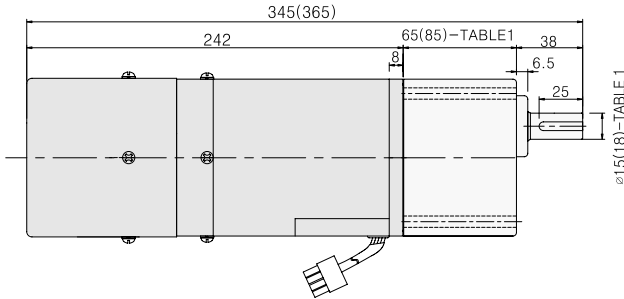
\* Note : Above table indicates output shaft dimension made by user's request and ★ indicates the basic dimension in factory shipping.

## 7. 180W

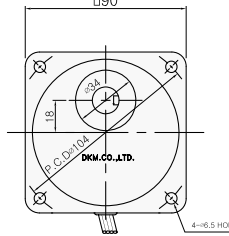
### ● LEAD WIRE TYPE

#### ◆ GEARED MOTOR

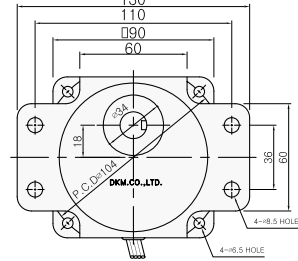
\* MOTOR MODEL : 9SBDG□-180F2P(H)(POWERFUL FAN)



\* GEARHEAD MODEL :  
9PB □ 3BH - 9PB □ 180BH

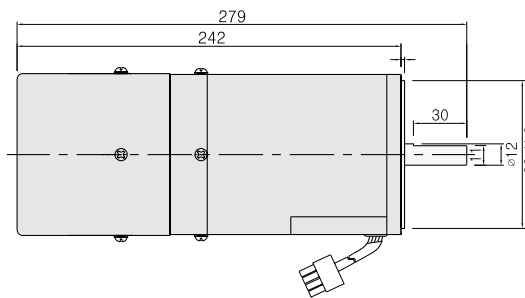


\* GEARHEAD MODEL :  
9PF □ 3BH - 9PF □ 180BH

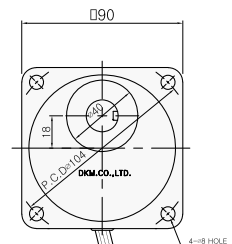
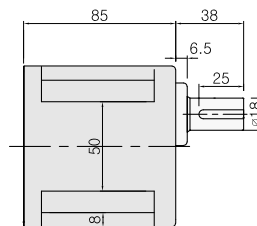
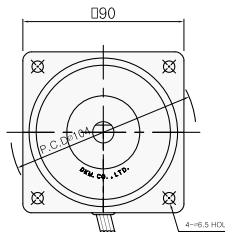


#### ◆ MOTOR ONLY

\* MOTOR MODEL : 9SBD □ □ - 180 F2 (POWERFUL FAN)

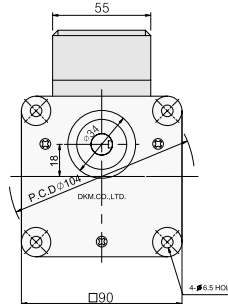
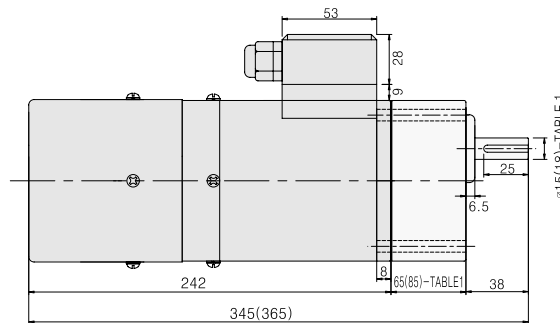


\* GEARHEAD MODEL : 9HB □ 3BH - 9HB □ 180BH



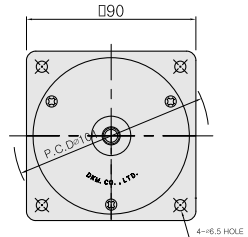
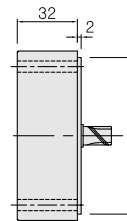
### ● TERMINAL BOX TYPE

\* MOTOR MODEL : 9SBDG□-180F2P(H)-T (POWERFUL FAN)



### ◆ INTER-DECIMAL GEARHEAD

\* MODEL : 9XD10M□



\* Note : For speed control motor, powerful Fan(F2) is basic specification.

#### ◆ 65(85)-TABLE1

| SIZE(mm) | GEARHEAD TYPE   |
|----------|-----------------|
| 65 - ø15 | P TYPE GEARHEAD |
| 85 - ø18 | H TYPE GEARHEAD |

#### ◆ KEY SPEC

| MOTOR | GEARHEAD |
|-------|----------|
|       |          |

#### ◆ WEIGHT

| PART             | WEIGHT(Kg)                      |        |        |
|------------------|---------------------------------|--------|--------|
| MOTOR            | 3.8                             |        |        |
| DECIMAL GEARHEAD | 0.5                             |        |        |
| GEAR HEAD        | GEARHEAD TYPE                   | P TYPE | H TYPE |
|                  | 9P(H)□□ 3BH<br>- 9P(H)□□9BH     | 1.3    | 1.45   |
|                  | 9P(H)□□ 12.5BH<br>- 9P(H)□□18BH | 1.3    | 1.5    |
|                  | 9P(H)□□ 25BH<br>- 9P(H)□□60BH   | 1.4    | 1.7    |
|                  | 9P(H)□□ 90BH<br>- 9P(H)□□180BH  | 1.4    | 1.8    |

#### ◆ GEARHEAD OUTPUT

| MODEL                       | P TYPE | H TYPE |
|-----------------------------|--------|--------|
| ROUND TYPE                  |        |        |
| 9P(H)□S3BH<br>~9P(H)□S180BH |        |        |
| D-CUT TYPE                  |        |        |
| 9P(H)□D3BH<br>~9P(H)□D180BH |        |        |
| KEY TYPE                    |        |        |
| 9P(H)□K3BH<br>~9P(H)□K180BH |        |        |

#### ◆ MOTOR OUTPUT

| MODEL           | SHAFT                          |
|-----------------|--------------------------------|
| GEAR TYPE       | 18.5(22)<br>                   |
| 9SBDG□-180□P(H) | * 18.5 : P TYPE<br>22 : H TYPE |
| ROUND TYPE      |                                |
| 9SBD□-180□      |                                |
| D-CUT TYPE      |                                |
| 9SBD□-180□      |                                |
| KEY TYPE        |                                |
| 9SBD□-180□      |                                |

\* Note : Above table indicates output shaft dimension made by user's request and ★ indicates the basic dimension in factory shipping.